

TAGHeuer
SWISS AVANT-GARDE SINCE 1860

THE PRICE LIST
APRIL 2007

Aquaracer Link
TAG Heuer Formula 1
Carrera

TAG Heuer Formula 1

	Case	Case Size	Dial	Bracelet/ Strap Finishing	Bracelet/ Strap Material	UPC	Suggested Retail US
Quartz Watch							
WAH1110.BT0714 (new)	Steel	41 mm	Black	Black	Rubber	760643106162	\$750
WAH1110.BA0850 (new)	Steel	41 mm	Black	Fine-Brushed	Steel	760643105936	\$795
WAH1111.BT0714 (new)	Steel	41 mm	White	Black	Rubber	760643105967	\$750
WAH1111.BA0850 (new)	Steel	41 mm	White	Fine-Brushed	Steel	760643105950	\$795
WAH1112.BT0714 (new)	Steel	41 mm	Red	Black	Rubber	760643106629	\$750
WAH1112.BA0850 (new)	Steel	41 mm	Red	Fine-Brushed	Steel	760643105974	\$795

Quartz Alarm Watch

WAC111A.BA0850	Steel	40 mm	Black	Fine-Brushed	Steel	760643099884	\$895
-----------------------	-------	-------	-------	--------------	-------	--------------	--------------

Quartz Chronograph

CAH1110.BT0714 (new)	Steel	41 mm	Black	Black	Rubber	760643105998	\$950
CAH1110.BA0850 (new)	Steel	41 mm	Black	Fine-Brushed	Steel	760643105981	\$995
CAH1111.BT0714 (new)	Steel	41 mm	Silver	Black	Rubber	760643106018	\$950
CAH1111.BA0850 (new)	Steel	41 mm	Silver	Fine-Brushed	Steel	760643106001	\$995
CAH1112.BT0714 (new)	Steel	41 mm	Red	Black	Rubber	760643106155	\$950
CAH1112.BA0850 (new)	Steel	41 mm	Red	Fine-Brushed	Steel	760643106124	\$995
CAH1113.BT0714 (new)	Steel	41 mm	Orange	Black	Rubber	760643106841	\$950
CAH1113.BA0850 (new)	Steel	41 mm	Orange	Fine-Brushed	Steel	760643106148	\$995

TAG Heuer Indy 500® Chronograph

CAC111B.BA0850	Steel	40 mm	Black with Indy 500 Logo	Fine-Brushed	Steel	760643088802	\$995
-----------------------	-------	-------	-----------------------------	--------------	-------	--------------	--------------

Quartz Watch

Midsize with Diamonds

WAC1214.FC6218 *	Steel with Diamonds	37 mm	Black	Black	Fabric	760643105059	\$1,995
WAC1214.BA0852	Steel with Diamonds	37 mm	Black	Fine Brushed / Polished	Steel	760643099624	\$1,995
WAC1215.FC6219 *	Steel with Diamonds	37 mm	White	White	Fabric	760643105066	\$1,995
WAC1215.BA0852	Steel with Diamonds	37 mm	White	Fine-Brushed / Polished	Steel	760643099600	\$1,995
WAC1216.FC6220 *	Steel with Diamonds	37 mm	Pink Mother of Pearl	Pink	Fabric	760643105073	\$1,995
WAC1216.BA0852	Steel with Diamonds	37 mm	Pink Mother of Pearl	Fine-Brushed / Polished	Steel	760643099617	\$1,995
WAC1217.FC6221 *	Steel with Diamonds	37 mm	Brown Mother of Pearl	Brown	Fabric	760643105080	\$1,995
WAC1218.FC6222 *	Steel with Diamonds	37 mm	Gray	Gray	Fabric	760643105097	\$1,995
WAC1219.FC6223 *	Steel with Diamonds	37 mm	Maroon	Maroon	Fabric	760643105103	\$1,995

Diamond Collection

New to the Collection for Summer/Fall 2007

* New fabric strap with folding buckle

Prices are subject to change without notice

All prices are FOB Springfield, NJ

Visit us at www.tagheuer.com

Aquaracer

	Case	Case Size	Dial	Bracelet/ Strap Finishing	Bracelet/ Strap Material	UPC	Suggested Retail US
Automatic Watch							
<i>With Aluminum Bezel</i>							
WAB2010.BA0804	Steel with Black Aluminum Bezel	41 mm	Black	Fine-Brushed	Steel	760643083500	\$1,595
WAB2011.BA0803	Steel with Blue Aluminum Bezel	41 mm	Blue	Fine-Brushed / Polished	Steel	760643083517	\$1,595
Quartz Watch							
<i>With Aluminum Bezel</i>							
WAB1110.BA0800	Steel with Black Aluminum Bezel	38 mm	Black	Fine-Brushed	Steel	760643079008	\$1,195
WAB1111.BA0801	Steel with Silver Aluminum Bezel	38 mm	Silver	Fine-Brushed / Polished	Steel	760643079091	\$1,195
WAB1112.BA0801	Steel with Blue Aluminum Bezel	38 mm	Blue	Fine-Brushed / Polished	Steel	760643079060	\$1,195
WAB1120.BB0802	Two-Tone with Blue Aluminum Bezel	38 mm	Blue	Fine-Brushed / Polished	Two-Tone	760643079077	\$1,395
Automatic Watch							
<i>With Steel Bezel</i>							
WAF2110.BA0806	Steel	38 mm	Black Guilloché	Fine-Brushed / Polished	Steel	760643088963	\$1,595
WAF2111.BA0806	Steel	38 mm	Silver Guilloché	Fine-Brushed / Polished	Steel	760643088994	\$1,595
WAF2112.BA0806	Steel	38 mm	Blue Guilloché	Fine-Brushed / Polished	Steel	760643089007	\$1,595
Quartz Watch							
<i>With Steel Bezel Ladies</i>							
WAF1410.BA0812	Steel	27 mm	Black	Fine-Brushed / Polished	Steel	760643091512	\$1,195
WAF1412.BA0812	Steel	27 mm	Silver	Fine-Brushed / Polished	Steel	760643091369	\$1,195
WAF1414.BA0812	Steel	27 mm	White Mother of Pearl	Fine-Brushed / Polished	Steel	760643091383	\$1,195
WAF1417.BA0812	Steel	27 mm	Blue Mother of Pearl	Fine-Brushed / Polished	Steel	760643091505	\$1,195
WAF1418.BA0812	Steel	27 mm	Pink Mother of Pearl	Fine-Brushed / Polished	Steel	760643091390	\$1,195
WAF1415.BA0813	Steel	27 mm	White Mother of Pearl with Diamonds	Polished	Steel	760643091680	\$1,895
WAF1419.BA0813	Steel	27 mm	Blue Mother of Pearl with Diamonds	Polished	Steel	760643091703	\$1,895
WAF141A.BA0813	Steel	27 mm	Pink Mother of Pearl with Diamonds	Polished	Steel	760643091697	\$1,895
WAF141C.BA0813	Steel	27 mm	Black with Diamonds	Polished	Steel	760643091635	\$1,895

Aquaracer

	Case	Case Size	Dial	Bracelet/ Strap Finishing	Bracelet/ Strap Material	UPC	Suggested Retail US
Quartz Watch <i>With Steel Bezel Ladies (continued)</i>							
WAF141G.BA0813	Diamonds on Studs	27 mm	White Mother of Pearl with Diamonds	Polished	Steel	760643056696	\$2,395
WAF141H.BA0813	Diamonds on Studs	27 mm	Pink Mother of Pearl with Diamonds	Polished	Steel	760643056702	\$2,395
WAF1416.BA0813	Steel with Diamonds	27 mm	White Mother of Pearl with Diamonds	Polished	Steel	760643091659	\$3,095
WAF141B.BA0813	Steel with Diamonds	27 mm	Pink Mother of Pearl with Diamonds	Polished	Steel	760643091642	\$3,095
WAF141D.BA0813	Steel with Diamonds	27 mm	Black with Diamonds	Polished	Steel	760643092649	\$3,095
WAF141J.BA0813 (new)	Steel with Diamonds	27 mm	Blue Mother of Pearl with Diamonds	Polished	Steel	760643106827	\$3,095
WAF1420.BB0814	Two-Tone	27 mm	Silver	Fine-Brushed / Polished	Two-Tone	760643091352	\$1,395
WAF1424.BB0814	Two-Tone	27 mm	White Mother of Pearl	Fine-Brushed / Polished	Two-Tone	760643091345	\$1,395
WAF1425.BB0814	Two-Tone	27 mm	White Mother of Pearl with Diamonds	Fine-Brushed / Polished	Two-Tone	760643093806	\$2,095
WAF1450.BB0814	Steel & 18k Gold with Diamonds	27 mm	White Mother of Pearl	Fine-Brushed / Polished	Two-Tone	760643056719	\$3,695

Quartz Watch

With Steel Bezel Gents

WAF1110.FT8009	Steel	38 mm	Black	Black	Rubber	760643091581	\$1,095
WAF1110.BA0800	Steel	38 mm	Black	Fine-Brushed	Steel	760643091574	\$1,195
WAF1111.BA0801	Steel	38 mm	White	Fine-Brushed / Polished	Steel	760643091567	\$1,195
WAF1112.FT8009	Steel	38 mm	Silver	Black	Rubber	760643091543	\$1,095
WAF1112.BA0801	Steel	38 mm	Silver	Fine-Brushed / Polished	Steel	760643091550	\$1,195
WAF1113.BA0801	Steel	38 mm	Blue	Fine-Brushed / Polished	Steel	760643091536	\$1,195
WAF1120.BB0807	Two-Tone	38 mm	Silver	Fine-Brushed / Polished	Two-Tone	760643091529	\$1,395
WAF1123.BB0807	Two-Tone	38 mm	Black	Fine-Brushed / Polished	Two-Tone	760643093844	\$1,395
WAF1115.BA0810	Steel	38 mm	White Mother of Pearl with Diamonds	Fine-Brushed / Polished	Steel	760643091673	\$1,895
WAF1117.BA0810 (new) June 2007	Steel	38 mm	Silver with Diamonds	Fine-Brushed / Polished	Steel	760643106834	\$1,895
WAF111C.BA0810	Steel	38 mm	Black with Diamonds	Fine-Brushed / Polished	Steel	760643091666	\$1,895
WAF1124.BB0807	Two-Tone	38 mm	White Mother of Pearl with Diamonds	Fine-Brushed / Polished	Two-Tone	760643056689	\$2,095
WAF111D.BA0810	Steel with Diamonds	38 mm	Black with Diamonds	Fine-Brushed / Polished	Steel	760643056788	\$4,595

Aquaracer

	Case	Case Size	Dial	Bracelet/ Strap Finishing	Bracelet/ Strap Material	UPC	Suggested Retail US
Quartz Alarm Watch							
WAF111Z.BA0801 (new)	Steel	38 mm	Black	Fine-Brushed / Polished	Steel	760643105929	\$1,395
Automatic Chronograph Day-Date							
CAF2010.FT8011 (new)	Steel	43 mm	Black	Black	Rubber	760643056054	\$2,595
CAF2010.BA0815 (new)	Steel	43 mm	Black	Fine-Brushed / Polished	Steel	760643056047	\$2,695
CAF2011.FT8011 (new)	Steel	43 mm	Silver	Black	Rubber	760643056078	\$2,595
CAF2011.BA0815 (new)	Steel	43 mm	Silver	Fine-Brushed / Polished	Steel	760643056061	\$2,695
CAF2012.BA0815 (new)	Steel	43 mm	Blue	Fine-Brushed / Polished	Steel	760643056085	\$2,695
Automatic Chronograph							
CAF2110.BA0809	Steel	41 mm	Black	Fine-Brushed / Polished	Steel	760643088925	\$2,295
CAF2111.BA0809	Steel	41 mm	Silver	Fine-Brushed / Polished	Steel	760643088932	\$2,295
CAF2112.BA0809	Steel	41 mm	Blue	Fine-Brushed / Polished	Steel	760643088949	\$2,295
CAF2120.BB0816	Two-Tone	41 mm	Silver	Fine-Brushed / Polished	Two-Tone	760643056665	\$2,495
Quartz Chronograph Calibre S							
CAF7110.BA0803 (new) June 2007	Steel	41 mm	Blue	Fine-Brushed	Steel	760643091758	\$1,995
CAF7111.BA0803 (new) June 2007	Steel	41 mm	Anthracite	Fine-Brushed	Steel	760643091604	\$1,995
Quartz Chronograph							
CAF1110.BA0804	Steel	41 mm	Black	Fine-Brushed	Steel	760643088901	\$1,695
CAF1111.BA0803	Steel	41 mm	Silver	Fine-Brushed / Polished	Steel	760643089045	\$1,695
CAF1112.BA0803	Steel	41 mm	Blue	Fine-Brushed / Polished	Steel	760643089052	\$1,695
Aquagraph Automatic Chronograph							
CN211A.FT8001	Steel	42 mm	Black	Black	Rubber	760643101013	\$2,995
CN211A.BA0353	Steel	42 mm	Black	Fine-Brushed	Steel	760643054258	\$3,195

Link

	Case	Case Size	Dial	Bracelet/ Strap Finishing	Bracelet/ Strap Material	UPC	Suggested Retail US
Automatic Watch							
WJF211A.BA0570	Steel	39 mm	Black with Black Sub-dial	Fine-Brushed	Steel	760643056726	\$2,295
WJF211B.BA0570	Steel	39 mm	Silver with Silver Sub-dial	Fine-Brushed	Steel	760643056733	\$2,295
WJF211C.BA0570	Steel	39 mm	Brown with Silver Sub-dial	Fine-Brushed	Steel	760643056740	\$2,295
GMT							
WJF2115.BA0587	Steel	42 mm	Black	Fine-Brushed	Steel	760643092724	\$2,495
WJF2116.BA0570	Steel	39 mm	Black	Fine-Brushed	Steel	760643099310	\$2,395
Tiger Woods Limited Editions							
WJF211D.BA0570	Steel	39 mm	Black Dial with Burgundy Sub-dial	Fine-Brushed	Steel	760643056757	\$2,495
WJF211E.BA0570	Steel with Diamonds	39 mm	Black Dial with Burgundy Sub-dial	Fine-Brushed	Steel	760643056764	\$5,195
Quartz Watch							
Ladies							
WJ1310.BA0571	Steel Rotating Bezel	27 mm	Silver	Fine-Brushed	Steel	760643065445	\$1,695
WJ1313.BA0572	Steel Rotating Bezel	27 mm	White Mother of Pearl	Polished	Steel	760643065568	\$1,695
WJ1314.BA0573	Steel Rotating Bezel	27 mm	Black	Fine-Brushed / Polished	Steel	760643065575	\$1,695
WJ1315.BA0573	Steel Rotating Bezel	27 mm	Pink Mother of Pearl	Fine-Brushed / Polished	Steel	760643065582	\$1,695
WJ1316.BA0573	Steel Rotating Bezel	27 mm	Blue Mother of Pearl	Fine-Brushed / Polished	Steel	760643065599	\$1,695
WJ1317.BA0573	Steel Rotating Bezel	27 mm	Blue Mother of Pearl with Diamonds	Fine-Brushed / Polished	Steel	760643065506	\$2,395
WJ1318.BA0572	Steel Rotating Bezel	27 mm	Black with Diamonds	Polished	Steel	760643065513	\$2,395
WJ1319.BA0572	Steel Rotating Bezel	27 mm	White Mother of Pearl with Diamonds	Polished	Steel	760643065520	\$2,395
WJ131C.BA0573	Steel Rotating Bezel	27 mm	Pink Mother of Pearl with Diamonds	Fine-Brushed / Polished	Steel	760643065490	\$2,395
WJF1317.BA0572	Steel Fixed Bezel	27 mm	White Mother of Pearl with Diamonds	Polished	Steel	760643079374	\$2,395
WJF131B.BA0572	Steel Fixed Bezel	27 mm	Pink Mother of Pearl with Diamonds	Polished	Steel	760643091321	\$2,395
WJF131C.BA0572	Steel Fixed Bezel	27 mm	Dark Blue Mother of Pearl with Diamonds	Polished	Steel	760643092687	\$2,395
WJF131D.BA0572	Steel Fixed Bezel	27 mm	Sky Blue Mother of Pearl with Diamonds	Polished	Steel	760643091338	\$2,395
WJF1319.BA0572	Steel with Diamonds	27 mm	White Mother of Pearl with Diamonds	Polished	Steel	760643088796	\$3,595
WJF131A.BA0572	Steel with Diamonds	27 mm	Black with Diamonds	Polished	Steel	760643088819	\$3,595
WJF131E.BA0572	Steel with Diamonds	27 mm	Pink Mother of Pearl with Diamonds	Polished	Steel	760643091314	\$3,595
WJF131F.BA0572	Steel with Diamonds	27 mm	Sky Blue Mother of Pearl with Diamonds	Polished	Steel	760643091307	\$3,595
WJF131G.BA0572	Steel with Diamonds	27 mm	Dark Blue Mother of Pearl with Diamonds	Polished	Steel	760643093820	\$3,595

Prices are subject to change without notice
 All prices are FOB Springfield, NJ
 Visit us at www.tagheuer.com

Link

	Case	Case Size	Dial	Bracelet/ Strap Finishing	Bracelet/ Strap Material	UPC	Suggested Retail US
Quartz Watch							
<i>Ladies (continued)</i>							
WJF1352.BB0581	Steel & 18k Gold	27 mm	White Mother of Pearl	Polished	Two Tone	760643079213	\$1,995
WJF1353.BB0581	Steel & 18k Gold	27 mm	White Mother of Pearl with Diamonds	Polished	Two Tone	760643079220	\$2,695
WJF1354.BB0581	Steel & 18k Gold with Diamonds	27 mm	White Mother of Pearl with Diamonds	Polished	Two Tone	760643088826	\$3,995
Quartz Watch							
<i>Gents</i>							
WJ1110.BA0570	Steel	39 mm	Black	Fine-Brushed	Steel	760643058904	\$1,695
WJ1111.BA0570	Steel	39 mm	Silver	Fine-Brushed	Steel	760643059000	\$1,695
WJ1112.BA0570	Steel	39 mm	Blue	Fine-Brushed	Steel	760643059017	\$1,695
WJ1113.BA0575	Steel	39 mm	Black with Diamonds	Fine-Brushed / Polished	Steel	760643061409	\$2,395
WJ1114.BA0575	Steel	39 mm	White Mother of Pearl with Diamonds	Fine-Brushed / Polished	Steel	760643061423	\$2,395
WJ1117.BA0575	Steel with Diamond Bezel	39 mm	Black with Diamonds	Fine-Brushed / Polished	Steel	760643079107	\$4,995
WJF1152.BB0579	Steel & 18k Gold	39 mm	White Mother of Pearl	Fine-Brushed / Polished	Two-Tone	760643079381	\$2,195
WJF1153.BB0579	Steel & 18k Gold	39 mm	White Mother of Pearl with Diamonds	Fine-Brushed / Polished	Two-Tone	760643079572	\$2,895
Calibre 36 Chronometer Chronograph							
CT511A.BA0564	Steel	42 mm	Black	Fine-Brushed	Steel	760643053039	\$5,495
CT511B.BA0564	Steel	42 mm	Silver	Fine-Brushed	Steel	760643053022	\$5,495
Automatic Chronograph							
CJF2110.BA0576	Steel	42 mm	Black	Fine-Brushed	Steel	760643079275	\$2,695
CJF2111.BA0576	Steel	42 mm	Silver	Fine-Brushed	Steel	760643079282	\$2,695
CJF2114.BA0576	Steel with Tachymeter	42 mm	Blue	Fine-Brushed	Steel	760643088871	\$2,895
CJF2115.BA0576	Steel with Tachymeter	42 mm	Gray	Fine-Brushed	Steel	760643088888	\$2,895
CJF2150.BB0590	Steel & 18k Gold with Tachymeter	42 mm	Silver	Fine-Brushed / Polished	Two-Tone	760643056771	\$3,495
Quartz Chronograph							
<i>Ladies</i>							
CJF1312.BA0580	Steel	33 mm	White Mother of Pearl with Diamonds	Polished	Steel	760643087430	\$2,595
CJF1314.BA0580	Steel with Diamonds	33 mm	White Mother of Pearl with Diamonds	Polished	Steel	760643088789	\$3,995
Quartz Chronograph							
<i>Gents</i>							
CJ1110.BA0576	Steel	42 mm	Black	Fine-Brushed	Steel	760643079299	\$2,150
CJ1111.BA0576	Steel	42 mm	Silver	Fine-Brushed	Steel	760643079404	\$2,150
CJ1112.BA0576	Steel	42 mm	Blue	Fine-Brushed	Steel	760643079312	\$2,150

Diamond Collection
Steel & 18k Gold or Diamond and Steel & 18k Gold Collection

Prices are subject to change without notice
All prices are FOB Springfield, NJ

Carrera

	Case	Case Size	Dial	Bracelet/ Strap Finishing	Bracelet/ Strap Material	UPC	Suggested Retail US
Automatic Watch							
WV211A.FC6203	Steel with Sapphire Caseback	39 mm	Silver	Brown	Leather	760643092656	\$1,595
WV211A.BA0787	Steel with Sapphire Caseback	39 mm	Silver	Fine-Brushed / Polished	Steel	760643083166	\$1,695
WV211B.FC6202	Steel with Sapphire Caseback	39 mm	Black	Black	Leather	760643093813	\$1,595
WV211B.BA0787	Steel with Sapphire Caseback	39 mm	Black	Fine-Brushed / Polished	Steel	760643083173	\$1,695
WV211D.FC6180 (new)	Steel with Sapphire Caseback	39 mm	White Mother of Pearl	Fine-Brushed / Polished	Steel	760643106865	\$1,695
WV211D.EB0017	Steel with Sapphire Caseback	39 mm	White Mother of Pearl	1) Blue 2) Black	1) Denim 2) Alligator	760643097712	\$1,895
WV215A.BD0788	Steel & 18k Gold with Tachymeter	39 mm	Silver	Fine-Brushed / Polished	Steel & 18k Gold	760643057006	\$2,695
Twin-Time Automatic Watch							
WV2115.FC6182	Steel	39 mm	Black	Black	Leather	760643065704	\$1,850
WV2115.FC6180	Steel	39 mm	Black	Black	Alligator	760643065681	\$1,995
WV2115.FC6181	Steel	39 mm	Black	Brown	Alligator	760643065698	\$1,995
WV2115.BA0787	Steel	39 mm	Black	Fine-Brushed / Polished	Steel	760643097774	\$1,995
WV2116.FC6182	Steel	39 mm	Silver	Black	Leather	760643065735	\$1,850
WV2116.FC6180	Steel	39 mm	Silver	Black	Alligator	760643065711	\$1,995
WV2116.FC6181	Steel	39 mm	Silver	Brown	Alligator	760643065728	\$1,995
WV2116.BA0787	Steel	39 mm	Silver	Fine-Brushed / Polished	Steel	760643097767	\$1,995
Automatic Chronograph Tachymeter							
CV2010.FC6205	Steel with Sapphire Caseback	41 mm	Black	Black	Leather	760643092663	\$2,795
CV2010.BA0786	Steel with Sapphire Caseback	41 mm	Black	Fine-Brushed / Polished	Steel	760643083180	\$2,895
CV2011.FC6205	Steel with Sapphire Caseback	41 mm	Silver	Black	Leather	760643092670	\$2,795
CV2011.BA0786	Steel with Sapphire Caseback	41 mm	Silver	Fine Brushed / Polished	Steel	760643083197	\$2,895
CV2013.FC6206	Steel with Sapphire Caseback	41 mm	Brown	Brown	Leather	760643092731	\$2,795
CV2014.FT6007	Steel with Sapphire Caseback	41 mm	Black	Black	Rubber	760643097736	\$2,795
CV2014.BA0786	Steel with Sapphire Caseback	41 mm	Black	Fine-Brushed / Polished	Steel	760643097835	\$2,895
CV2015.BA0786	Steel with Sapphire Caseback	41 mm	Blue	Fine-Brushed / Polished	Steel	760643092748	\$2,895
CV2050.BD0789	Steel & 18k Gold with Sapphire Caseback	41 mm	Silver	Fine-Brushed / Polished	Steel & 18k Gold	760643056795	\$3,695

Steel & 18k Gold Collection
New to the Collection for Summer/Fall 2007

Prices are subject to change without notice
All prices are FOB Springfield, NJ
Visit us at www.tagheuer.com

Carrera

	Case	Case Size	Dial	Bracelet/ Strap Finishing	Bracelet/ Strap Material	UPC	Suggested Retail US
Automatic Chronograph							
CV2110.FC6181	Steel	39 mm	Silver	Brown	Alligator	760643052827	\$2,995
CV2111.FC6180	Steel	39mm	Black	Black	Alligator	760643059925	\$2,995
CV2111.FC6182	Steel	39 mm	Black	Black	Leather	760643065421	\$2,850
CV2113.FC6182	Steel	39 mm	Black Racing	Black	Leather	760643067197	\$2,850
CV2113.FC6180	Steel	39 mm	Black Racing	Black	Alligator	760643052803	\$2,995
CV2115.FC6180	Steel	39 mm	White Mother of Pearl	Black	Alligator	760643070265	\$2,995
CV2115.FC6185	Steel	39 mm	White Mother of Pearl	Beige	Alligator	760643070241	\$2,995
CV2115.FC6186	Steel	39 mm	White Mother of Pearl	Burgundy	Alligator	760643070258	\$2,995
CV2116.FC6180	Steel with Diamond Bezel	39 mm	White Mother of Pearl	Black	Alligator	760643070296	\$5,795
CV2116.FC6185	Steel with Diamond Bezel	39 mm	White Mother of Pearl	Beige	Alligator	760643070272	\$5,795
CV2116.FC6186	Steel with Diamond Bezel	39 mm	White Mother of Pearl	Burgundy	Alligator	760643070289	\$5,795
CV2116.EB0017	Steel with Diamond Bezel	39 mm	White Mother of Pearl	1) Blue 2) Black	1) Denim 2) Alligator	760643097729	\$5,995

Monaco

	Case	Case Size	Dial	Bracelet/ Strap Finishing	Bracelet/ Strap Material	UPC	Suggested Retail US
Automatic Watch							
WW2110.FT6005	Steel	37 mm	Black	Black	Rubber	760643092700	\$2,195
WW2110.FC6177	Steel	37 mm	Black	Black	Alligator	760643092694	\$2,295
WW2111.FC6204	Steel	37 mm	Blue	Blue	Alligator	760643092717	\$2,295
WW2112.FC6215	Steel	37 mm	White Mother of Pearl	Cream	Alligator	760643057013	\$2,295
WW2113.FC6215	Steel	37 mm	White Mother of Pearl with Diamonds	Cream	Alligator	760643057020	\$2,695
WW2114.FC6215	Steel with Diamonds	37 mm	White Mother of Pearl with Diamonds	Cream	Alligator	760643057082	\$4,995
WW2115.FC6217	Steel	37 mm	Brown	Brown	Python	760643058485	\$2,295
WW2116.FC6217	Steel	37 mm	Brown with Diamonds	Brown	Python	760643058492	\$2,695
WW2117.FC6216	Steel	37 mm	Black with Diamonds	Black	Python	760643057068	\$2,695
WW2118.FC6216	Steel with Diamonds	37 mm	Black with Diamonds	Black	Python	760643057075	\$4,995

Automatic Chronograph

CW2111.FC6177	Steel	40 mm	Black	Black	Alligator	760643052476	\$3,195
CW2111.BA0780	Steel	40 mm	Black	Fine-Brushed / Polished	Steel	760643065834	\$3,195
CW2113.FC6183	Steel	40 mm	Blue	Dark Blue	Alligator	760643047199	\$3,195
CW2113.BA0780	Steel	40 mm	Blue	Fine-Brushed / Polished	Steel	760643065841	\$3,195
CW2114.EB0017	Steel	40 mm	Brown - Sunray	1) Brown & Beige 2) Brown	1) Natural Python 2) Alligator	760643079237	\$3,295
CW2117.FC6198	Steel	40 mm	White	White	Perforated Leather	760643088406	\$3,195
CW2119.FC6177 (new)	Steel	40 mm	White Mother of Pearl	Black	Alligator	760643106858	\$3,195
CW2119.EB0017	Steel	40 mm	White Mother of Pearl	1) Blue 2) Black	1) Denim 2) Alligator	760643097705	\$3,295
CW211A.FC6228 (new) April 2007	Steel	40 mm	Black with Orange and Blue	Blue	Alligator	760643106223	\$3,295

Monaco 69

CW9110.FC6177	Steel	40 mm	Black - Sunray	Black	Alligator	760643087300	\$6,900
---------------	-------	-------	----------------	-------	-----------	--------------	----------------

Specialist

	Case	Case Size	Dial	Bracelet/ Strap Finishing	Bracelet/ Strap Material	UPC	Suggested Retail US
MicroTimer							
1/1000 Digital Chronograph							
CS111C.FT6003	Steel	38 mm x 42 mm	Black LCD Display	Black	Rubber	760643065858	\$1,995
CS111F.FC6200	Steel with Diamonds	38 mm x 42 mm	LCD with Black Digits and Mirror Dial	Dark Gray	Fabric	760643087447	\$6,995
CS111G.FC6199	Steel	38 mm x 42 mm	LCD with Black Digits and Mirror Dial	White	Alligator	760643087454	\$2,095
Professional Golf Watch							
WAE1111.FT6004	Titanium	38 mm	Black	Black	Rubber	760643093837	\$1,395
WAE1112.FT6008	Titanium	38 mm	White	White	Rubber	760643097743	\$1,395
SLR For Mercedes Benz							
CAG2110.FC6209	Steel	43 mm	Black	Black	Alligator	760643097750	\$3,995

Straps and Bracelets

	Case	Case size	Bracelet/ Strap Finishing	Bracelet/ Strap Material	Suggested Retail US
TAG Heuer Formula 1					
BA0850	Watch & Chronograph	41 mm	Fine-Brushed	Steel	\$130
BA0851	Watch	37 mm	Fine-Brushed	Steel	\$130
BA0852	Watch	37 mm	Fine-Brushed / Polished	Steel	\$130
BT0714	Watch & Chronograph	41 mm	Black	Rubber with Buckle	\$65
FC6218	Watch	37 mm #	Black	Fabric	\$85
FC6219	Watch	37 mm #	White	Fabric	\$85
FC6220	Watch	37 mm #	Pink	Fabric	\$85
FC6221	Watch	37 mm #	Brown	Fabric	\$85
FC6222	Watch	37 mm #	Gray	Fabric	\$85
FC6223	Watch	37 mm #	Maroon	Fabric	\$85
Aquaracer					
BA0353	Aquagraph	42 mm	Fine-Brushed	Steel	\$250
BA0800	Watch	38 mm	Fine-Brushed	Steel	\$200
BA0801	Watch	38 mm	Fine-Brushed / Polished	Steel	\$200
BA0803	Automatic Watch / Chronograph	41 mm	Fine-Brushed / Polished	Steel	\$200
BA0804	Automatic Watch / Chronograph	41 mm	Fine Brushed	Steel	\$200
BA0806	Watch	38 mm	Fine-Brushed / Polished	Steel	\$200
BA0809	Chronograph	41 mm	Fine-Brushed / Polished	Steel	\$200
BA0810	Watch	27 mm	Fine-Brushed / Polished	Steel	\$200
BA0812	Watch	27 mm	Fine-Brushed / Polished	Steel	\$200
BA0813	Watch	27 mm	Polished	Steel	\$200
BA0815	Chronograph	43 mm	Fine-Brushed / Polished	Steel	\$200
BB0802	Watch	38 mm	Fine-Brushed / Polished	Two-Tone	\$400
BB0807	Watch	38 mm	Fine-Brushed / Polished	Two-Tone	\$400
BB0814	Watch	27 mm	Fine-Brushed / Polished	Two-Tone	\$400
BB0816	Chronograph	41 mm	Fine-Brushed / Polished	Two-Tone	\$400
BT0701	Aquagraph	42 mm	Black	Rubber with buckle	\$160
BT0709	Watch	38 mm	Black	Rubber with buckle	\$130
BT0712	Chronograph	43 mm	Black	Rubber with buckle	\$160
ER0004	Aquagraph Kit	42 mm	Black	Rubber	\$300
FT8001	Aquagraph	42 mm	Black	Rubber	\$140
FT8009	Watch	38 mm	Black	Rubber	\$110
FT8011	Chronograph	43 mm	Black	Rubber	\$140

Straps and buckles are sold separately, unless otherwise specified.
Straps available in extra long (FX)

Prices are subject to change without notice
All prices are FOB Springfield, NJ
Visit us at www.tagheuer.com

Straps and Bracelets

	Case	Case Size	Bracelet/ Strap Finishing	Bracelet/ Strap Material	Suggested Retail US
Carrera					
BA0786	Chronograph	41 mm	Fine-Brushed / Polished	Steel	\$250
BA0787	Watch	39 mm	Fine-Brushed / Polished	Steel	\$250
BD0788	Watch	39 mm	Fine-Brushed / Polished	Steel & 18k Gold	\$1,300
BD0789	Chronograph	41 mm	Fine-Brushed / Polished	Steel & 18k Gold	\$1,500
FC6180	Watch & Chronograph	39 mm *	Black	Alligator	\$250
FC6181	Watch & Chronograph	39 mm *	Gold Brown	Alligator	\$250
FC6182	Watch & Chronograph	39 mm *	Black	Leather	\$85
FC6185	Chronograph	39 mm *	Beige	Alligator	\$250
FC6186	Chronograph	39 mm *	Burgundy	Alligator	\$250
FC6191	Calibre 360	41 mm	Black	Alligator	\$250
FC6202	Watch	39 mm	Black	Leather	\$85
FC6203	Watch	39 mm	Brown	Leather	\$85
FC6205	Chronograph	41 mm	Black	Leather	\$85
FC6206	Chronograph	41 mm	Brown	Leather	\$85
FC8160	Calibre 360 18k White Gold	41 mm	Dark Blue	Alligator	\$650
FC8164	Calibre 360 18k Rose Gold	41 mm	Chocolate Brown	Alligator	\$650
FT6007	Chronograph	41 mm	Black	Rubber	\$160
Link					
BA0564	Calibre 36	42 mm	Fine-Brushed	Steel	\$450
BA0570	Watch	39 mm	Fine-Brushed	Steel	\$450
BA0571	Watch	27 mm	Fine-Brushed	Steel	\$450
BA0572	Watch	27 mm	Polished	Steel	\$450
BA0573	Watch	27 mm	Fine-Brushed / Polished	Steel	\$450
BA0575	Jewelry Watch	39 mm	Fine-Brushed / Polished	Steel	\$450
BA0576	Chronograph	42 mm	Fine-Brushed	Steel	\$450
BA0580	Chronograph	33 mm	Polished	Steel	\$450
BA0587	Watch	42 mm	Fine-Brushed / Polished	Steel	\$450
BB0579	Watch	39 mm	Fine-Brushed / Polished	Two-tone	\$650
BB0581	Watch	27 mm	Fine-Brushed / Polished	Two-tone	\$650

Straps and buckles are sold separately, unless otherwise specified.
*Straps available in short (FY) and extra long (FX)

Prices are subject to change without notice
All prices are FOB Springfield, NJ

Straps and Bracelets

	Case	Case Size	Bracelet/ Strap Finishing	Bracelet/ Strap Material	Suggested Retail US
Monaco					
BA0780	Chronograph	40 mm	Fine-Brushed / Polished	Steel	\$500
FC6177	Chronograph / Watch	40 mm / 37 mm *	Black	Alligator	\$295
FC6183	Chronograph	40 mm *	Dark Blue	Alligator	\$295
FC6187	Chronograph	40 mm	Brown	Python	\$295
FC6198	Chronograph	40 mm	Perforated White	Leather	\$125
FC6204	Watch	37 mm	Dark Blue	Alligator	\$295
FC6207	Chronograph	40 mm	Dark Blue	Alligator	\$295
FT6005	Watch	37 mm	Black	Rubber	\$160
FC6215	Watch	37 mm **	Cream	Alligator	\$295
FC6216	Watch	37 mm **	Black	Python	\$295
FC6217	Watch	37 mm **	Brown	Python	\$295
FC6228	Chronograph	40 mm	Blue	Alligator	\$295
Microtimer					
FT6003	LCD Watch	38 mm x 42 mm	Black	Rubber	\$175
FC6200	LCD Watch	38 mm x 42 mm	Gray	Fabric	\$400
FC6199	LCD Watch	38 mm x 42 mm	White	Alligator	\$500
Golf Watch					
FT6004	Watch	38 mm	Black	Rubber	\$160
FT6008	Watch	38 mm	White	Rubber	\$160
SLR Enthusiast					
FC6209	Chronograph	43 mm	Black	Alligator	\$450
Monza					
<i>Gents</i>					
FC6164	Watch & Chronograph	39 mm	Black	Alligator	\$250
FC6165	Watch & Chronograph	39 mm	Dark Brown	Alligator	\$250
FC6175	Calibre 36 Chronograph	39 mm	Black	Alligator	\$250
FC6176	Calibre 36 Chronograph	39 mm	Dark Brown	Alligator	\$250
Kirium					
BA0700	Watch & Chronograph	39 mm	Fine-Brushed	Steel	\$575
FT6000	Watch & Chronograph	39 mm	Black	Rubber	\$165

Straps and buckles are sold separately, unless otherwise specified.

*Straps available in short (FY) and extra long (FX)

**Straps are short length, also available in regular length (FX)

Prices are subject to change without notice

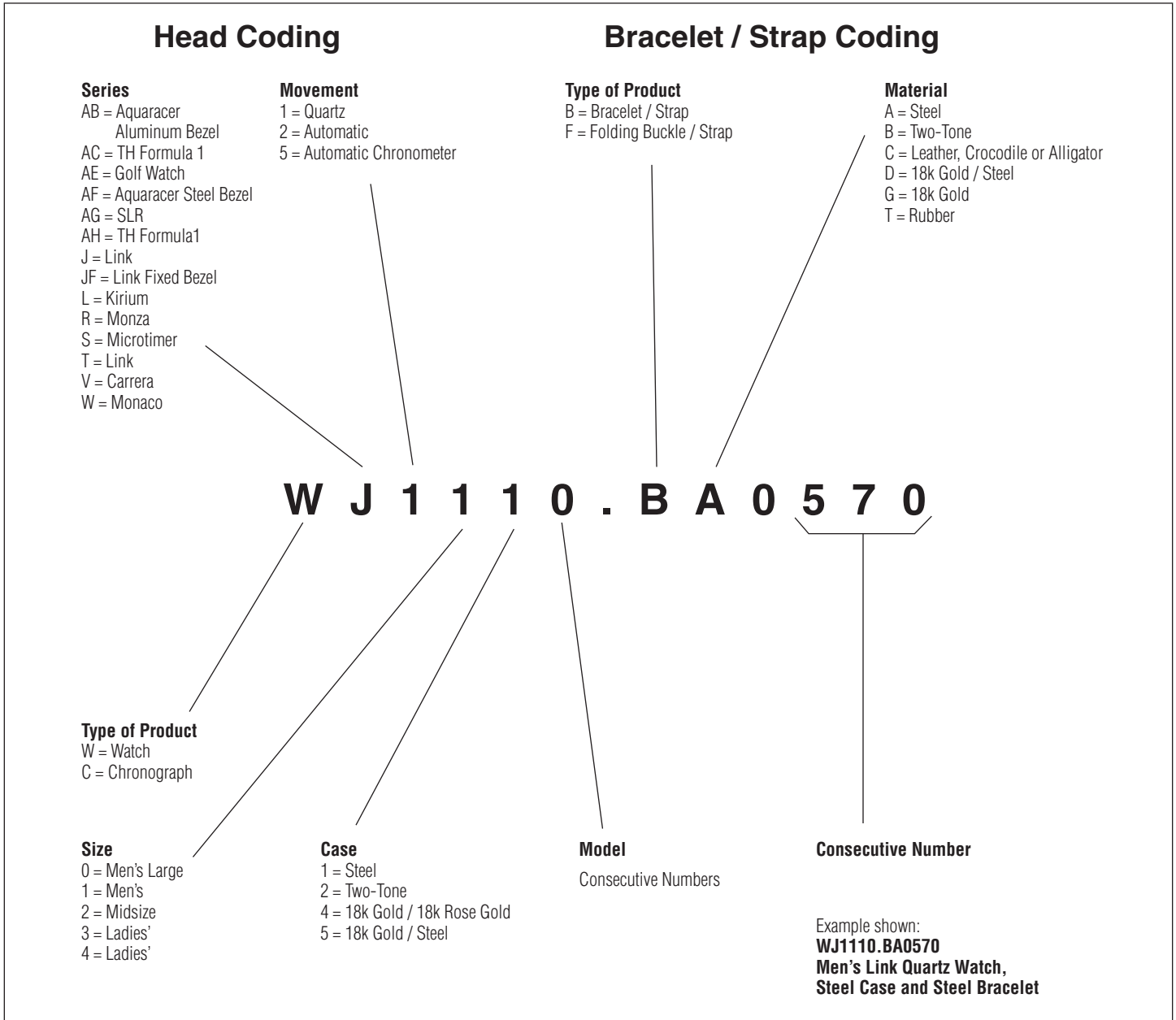
All prices are FOB Springfield, NJ

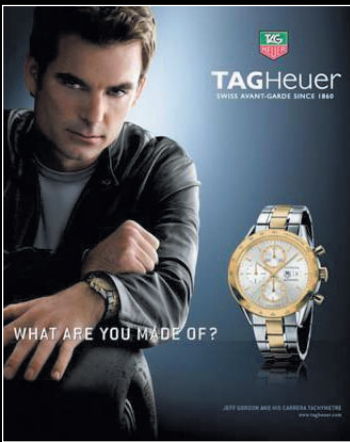
Visit us at www.tagheuer.com

Buckles

	Size	Case	Bracelet/ Strap Finishing	Bracelet/ Strap Material	Suggested Retail US
TAG Heuer Formula 1					
FC5029	Watch	37 mm	Folding Buckle	Steel	\$65
Carrera					
FC5014	Watch & Chronograph	39 mm / 41 mm	Folding Buckle	Steel	\$150
Monaco					
FC5014	Watch & Chronograph	37 mm / 40 mm	Folding Buckle	Steel	\$150
Microtimer					
FC5016	LCD Watch	38 mm x 42 mm	Folding Buckle	Steel	\$150
Golf Watch					
FC5022	Watch	38 mm	Folding Buckle	Steel	\$150
Monza					
<i>Gents</i>					
FC5013	Watch & Chronograph	39 mm	Folding Buckle	Steel	\$150

Structure of Coding





A DIVISION OF LVMH WATCH & JEWELRY USA
 966 SOUTH SPRINGFIELD AVENUE, SPRINGFIELD, NEW JERSEY 07081
www.tagheuer.com
 866-260-3332

Aquaracer Link
 TAG Heuer Formula 1
 Carrera